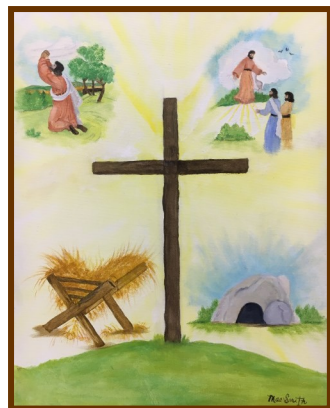




Together

Churches Serving Christ—Together

205 Walton Street • P O Box 888 • Columbiana AL 35051 • 205.669.7858 • shelbybaptist.org



Christmas Gift Shop Opportunity for Giving

**CHRISTMAS GIFT SHOP:
NOVEMBER 26—DECEMBER 12**

Please pray for the Christmas Gift Shop team as they tirelessly serve families. Parents receive gifts for their children along with Christmas goodies for the entire family. Most of all, the wondrous story of our Savior is shared—the greatest gift of all!

OPPORTUNITY TO GIVE: \$30,000 GOAL

Financial contributions are needed to purchase toys for the gift shop. Make checks payable to SBA CCM (P O Box 888, Columbiana, AL 35051). Designate checks to Christmas Gift Shop. All donations are 100% tax deductible.

If you have not had a chance to give or volunteer for CGS, it's not too late. Here are our current needs:

- Cookie Tins
- Toy Room Stockers, Mantle Room Workers, and Buddies
- Christmas Stocking Stuffers
- Bibles (large print and Children's Bibles most needed) • New Toys/Gifts and Money for Toys/Gifts • Wrapping Paper – We can even take rolls of paper after Christmas to use next year!
- Prayer Warriors – We need people to sign up to pray in our prayer room at the Gift Shop when it is open (Nov. 26–Dec.12)

Please contact Rebekah Parr at 669-7858

or Rebekah@shelbybaptist.org regarding Christmas Gift Shop.

Daily Bread Shop

Daily Bread Shop needs canned fruit, canned tomatoes, Hamburger Helper, jelly, ketchup, mustard, pop tarts, spaghetti noodles, spaghetti sauce, sugar, household cleaning products, dish washing detergent, and personal toiletries such as bars of soap, men and women's deodorant, shampoo, etc.



Contact Keith Brown at kbrown@shelbybaptist.org or (205) 669-7858 for details on a successful food drive.

NOVEMBER

FBC—Pelham
Pleasant Grove
Providence
University
Wilton

DECEMBER

Double Oak
Enon
FBC Vincent
Mt. Signal
South Shelby BC

Shelby Baptist Association is proud to announce its new partnership with Piedmont International University in providing an opportunity for all the churches in our association to bring seminary classes and training through Temple Baptist Seminary to the members of our association. Piedmont's unique e4-12 education program provides both a Master of Arts in Ministry degree and an Enrichment training program to all Alabama Baptists in our association. If you have general questions about e4-12 or enrolling, please go to www.e4-12.com and then click on "important links" to register. Courses will begin Tuesday, January 15, 6:30 P.M. in the conference room of Shelby Baptist Association Ministry Center. All applications need to be received by Dec. 14th.

Ephesians 4:12 equipping the saints | building the body

our goal is to develop Christian leaders who are:

- competent in Biblical and theological knowledge
- strong in their personal faith
- skilled in ministry
- outstanding in communication
- prepared to understand and engage their culture with courageous proclamation of the gospel and confident defense of the faith

Earn a 30-hour Master of Arts in Ministry Degree

1. Apply to Piedmont International University
2. Enroll as a student
3. Purchase course texts
4. Attend the class at the scheduled time
5. Submit assignments

Take courses for enrichment

1. Register online for the course offered
2. Purchase the course workbook (optional)
3. Attend the class at the scheduled time

Whether you would like to earn a master's degree or would simply desire to learn more about God's Word and become better equipped for ministry, **e4-12 is for you.** For questions or inquiry, please contact us.

800.937.5097

e4-12@piedmontu.edu



PIEDMONT
INTERNATIONAL UNIVERSITY
TEMPLE BAPTIST SEMINARY



e4-12.com

Ministers Conference: DECEMBER 4, 2018



Active and retired ministers—join the Ministers Conference Tuesday, December 4th at the Shelby Medical Center in the Physicians Conference Room. Enjoy guest speaker, Professor Mark DeVine, from Beeson Divinity School as he discusses Revelation 1-3.

Lunch is served at 11:30 am compliments of the Shelby Medical Center. Reservations are a must. Register at www.shelbybaptist.org or call 205-669-7858 by Wednesday, November 28 to make individual and group reservations.

Upcoming Events

Nov 22-23 Thanksgiving Holiday. SBA and CCM Offices will be closed.

Nov 22 Earthly Treasures Thrift Store Will be closed. It will reopen Friday, November 23.

Nov 26 Christmas Gift Shop Opens

Dec 13 Last day Ministry Center open in 2018.

Dec 24–25 Christmas Holidays. SBA and CCM Offices will be closed.

Dec 24–25 Earthly Treasures Closed. It will reopen Wednesday, December 26.

Dec 29 Earthly Treasures Closed for inventory.

Dec 31–Jan 1 New Year's Holidays. SBA and CCM Offices will be closed.

Jan 1 Earthly Treasures Closed. It will reopen Tuesday, January 2.